

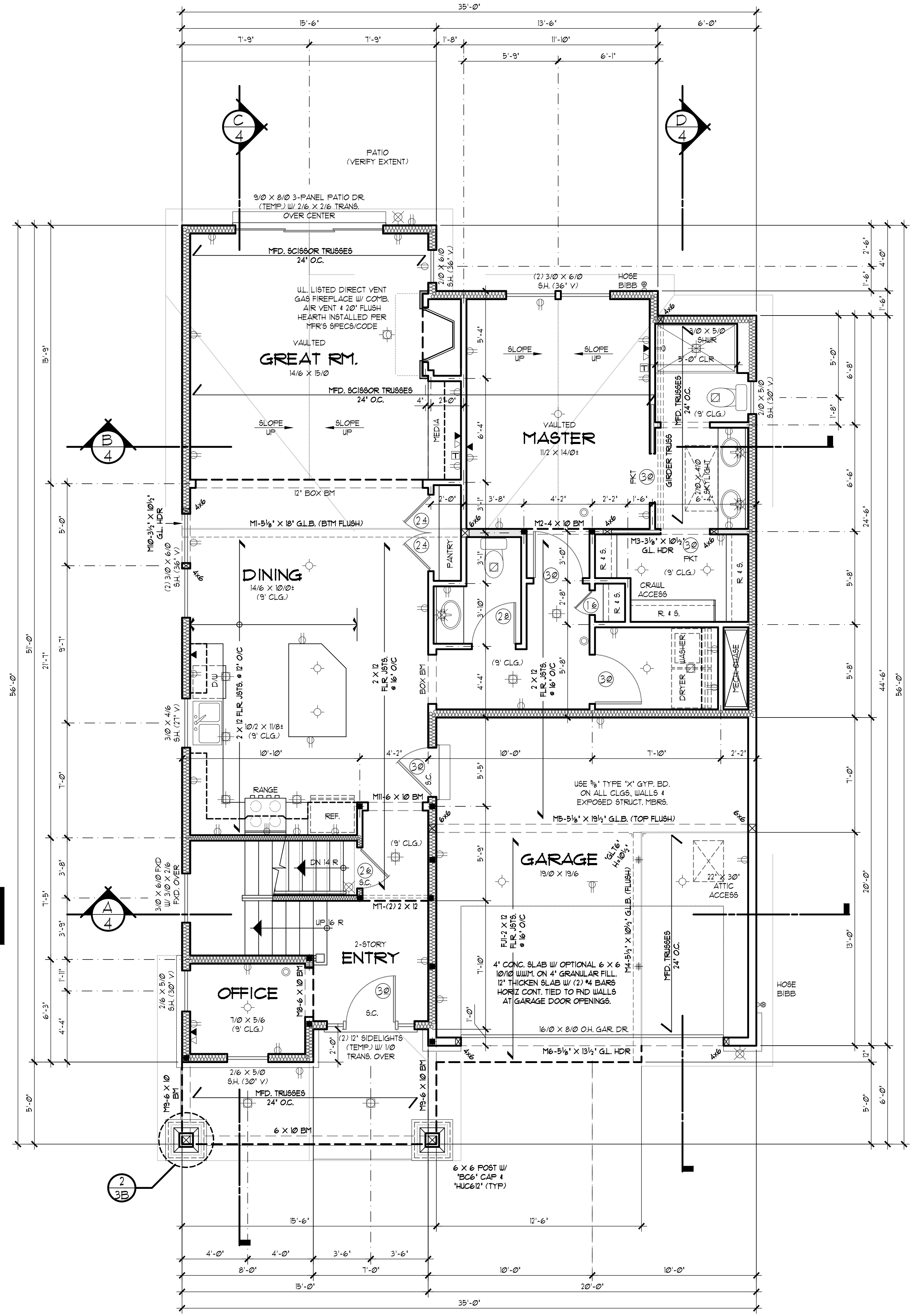
- LEGEND**
- ⊙ RECESSED LIGHT
  - ⊙ RECESSED DIRECTIONAL LIGHT FIXTURE
  - ⊙ WALL-MOUNT LIGHT
  - ⊙ SURFACE-MOUNT LIGHT
  - ⊙ FLOOD LIGHT
  - ⊙ SURFACE MOUNTED FLUORESCENT
  - ⊙ RECESSED EXHAUST FAN VENTED TO THE EXTERIOR
  - ⊙ CEILING FAN
  - ⊙ DUPLEX OUTLET
  - ⊙ CEILING MOUNTED DUPLEX OUTLET
  - ⊙ 220V OUTLET
  - ⊙ FLUSH FLOOR MOUNTED OUTLET (VERIFY LOC.)
  - ⊙ TELEPHONE OUTLET
  - ⊙ DATA OUTLET
  - ⊙ TELEVISION OUTLET
  - ⊙ SPEAKER LOCATION
  - ⊙ SMOKE / CO DETECTOR (SEE 'GENERAL NOTES' FOR OTHER SPECS)
  - ⊙ BEARING POINT LOCATION (PROVIDE SOLID BEARING - MIN. OF MEMBER WIDTH UNO.)
  - ⊙ POINT LOAD FROM ABOVE
  - ⊙ 4 X 4 POST FROM ROOF HIP VALLEY OR RIDGE DOWN TO BEARING POINT ON WALL BELOW (MAX. OF 45' FROM VERT.)
  - ⊙ BEARING WALL SUPPORTING STRUCTURE ABOVE
  - ⊙ 4 X 10 HDR. # BEARING WALL INT. DOOR & OPENINGS W/ MIN. (2) 2 X SUPPORT EA END (UNO.)
  - ⊙ DROPPED STRUCT. MEMBER BEARING # WALL

**ENERGY ENVELOPE KEY**

WALL/FLR/CLG. INSUL.  
FOUNDATION INSUL.  
(SEE SHEET 'G' FOR INSULATION VALUES)

**C.O. DET LOCATION**

CARBON MONOXIDE ALARMS SHALL BE LOCATED IN EA. BEDROOM OR WITHIN 15 FEET OUTSIDE OF EA. BEDROOM DOOR, AT EVERY FLOOR LEVEL W/ BEDROOMS (SEE SHEET 'G' FOR ADD'L INFO)



UPPER FLOOR	854 SQ. FT.
MAIN FLOOR	1274 SQ. FT.
<b>TOTAL AREA</b>	<b>2128 SQ. FT.</b>
UNFIN. BASEMENT	1164 SQ. FT.
GARAGE AREA	391 SQ. FT.